

Method to capture images.

The PVDF membranes were sliced into sections based on the expected protein molecular weight prior to incubation with the primary antibody. The sections were positioned to reconstruct the original membrane for imaging. Bright field and chemiluminescence images were captured using a Chemidoc Gel Imaging System. The dashed lines represent the separation between membrane sections. Substrates and exposure times are indicated above each image. Blue boxes represent bands used to build the figures.

Fig. 1

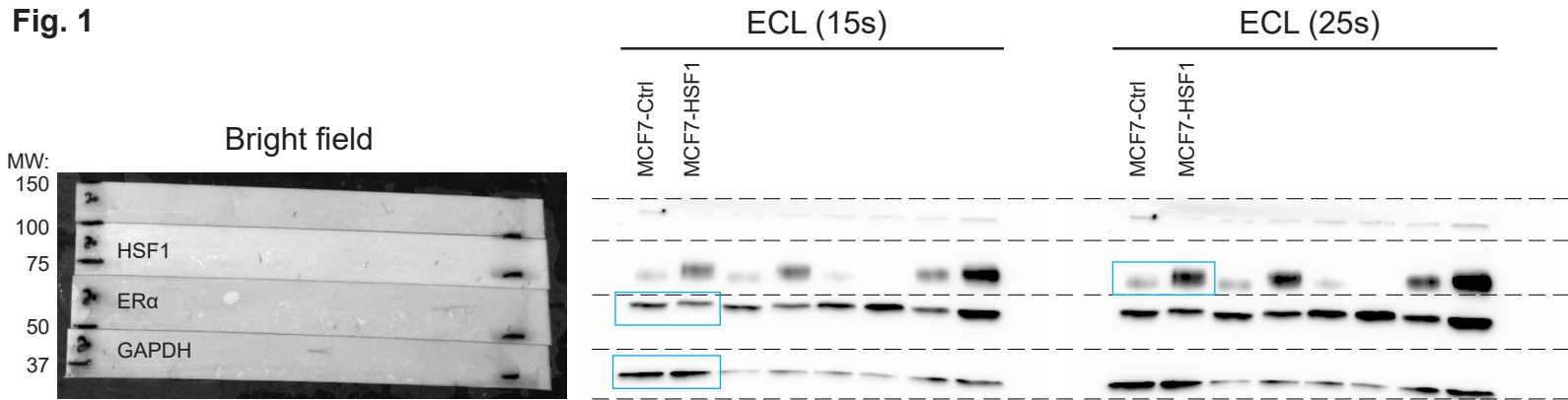


Fig. S1

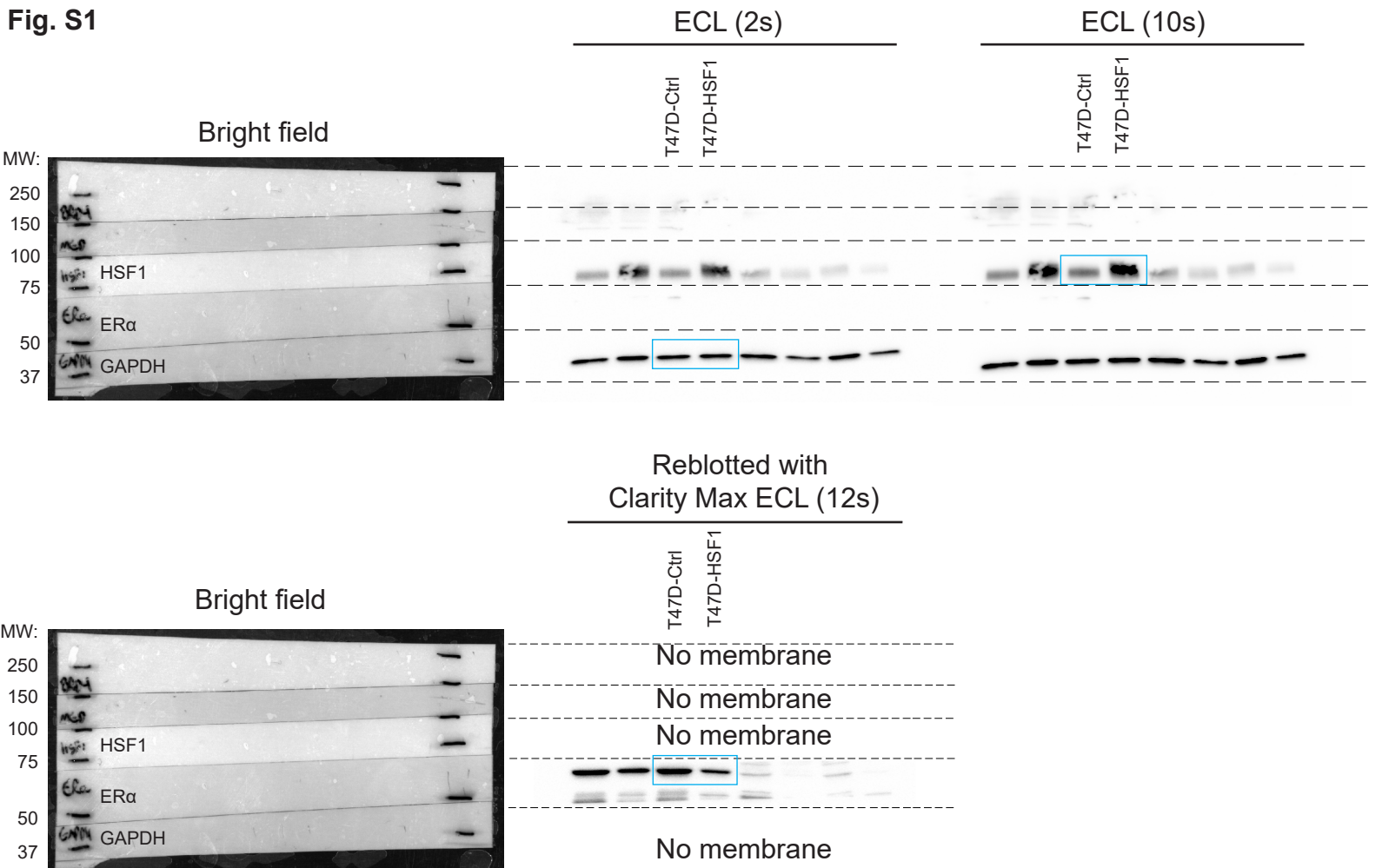


Fig. S3

Bright field

