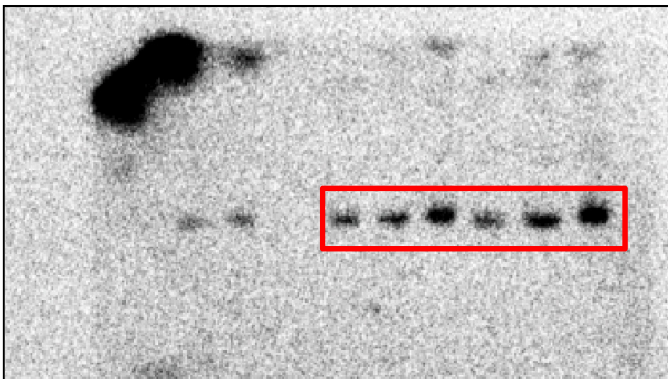
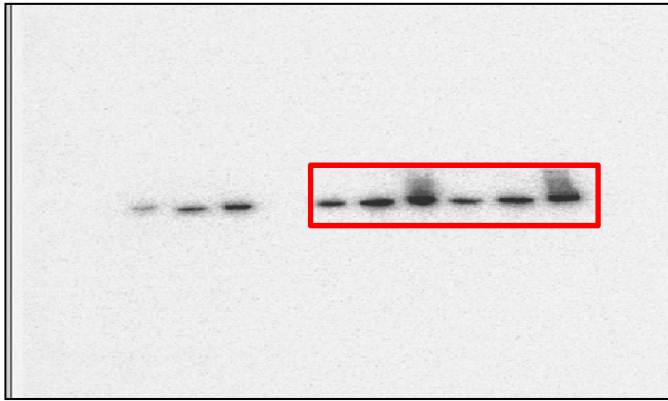
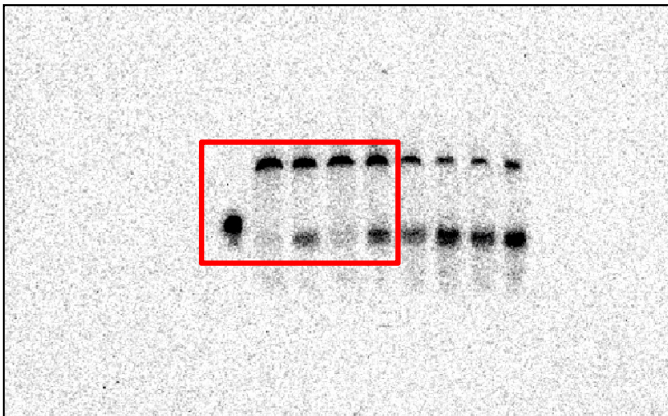


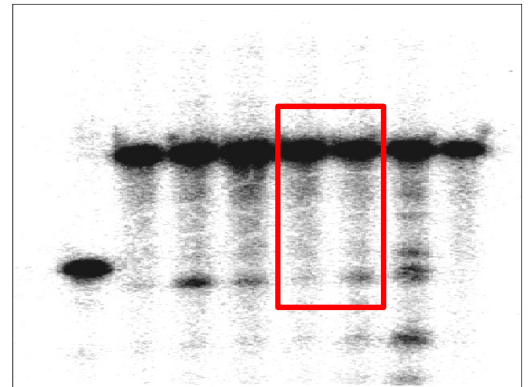
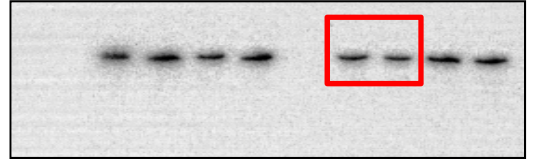
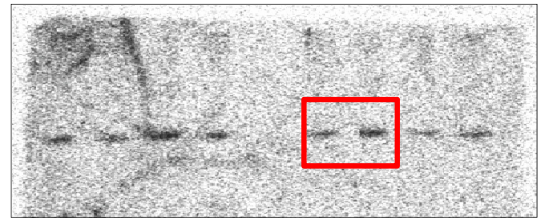
B



C



D



F

EXPI							
	miR-122		U6				
with RL3xb122	24	23.89333	23.58	23.73333	0.16	0	1
	23.93		23.93				
	23.75		23.69				
withRL3xb122	21.18	21.35333	21.98	22.14667	-0.79333	-0.95333	1.936341
	21.36		22.21				
	21.52		22.25				
EXPII							
with RL3xb122	22.19	21.96	23.03	23.13333	-1.17333	0	1
	21.97		23.22				
	21.72		23.15				
withRL3xb122	20.66	20.86	23.14	23.15333	-2.29333	-1.12	2.17347
	20.98		23.28				
	20.94		23.04				
EXPIII							
with RL3xb122	23.86	23.805	23.97	24.10333	-0.29833	0	1
	28.98		24.11				
	23.75		24.23				
withRL3xb122	21.8	21.80667	22.37	23.18667	-1.38	-1.08167	2.11648
	21.83		23.48				
	21.79		23.71				

EXPIII							
	miR-122		U6				
with RL3xb122	25.61	25.35333	24.13	24.30333	1.05	0	1
	25.22		24.34				
	25.23		24.44				
withRL3xb122	21.11	21.67	22.83	22.93	-1.26	-2.31	4.958831
	22.77		22.92				
	21.13		23.04				
EXPI							
	miR-122		U6				
with RL3xb122	25.01	25.36333	23.58	23.73333	1.63	0	1
	25.33		23.93				
	25.75		23.69				
withRL3xb122	21.38	21.69	21.98	22.14667	-0.45667	-2.08667	4.247655
	21.36		22.21				
	22.33		22.25				
EXPIII							
with RL3xb122	24.12	24.34667	23.03	23.13333	1.213333	0	1
	24.56		23.22				
	24.36		23.15				
withRL3xb122	22.33	22.38	23.14	23.15333	-0.77333	-1.98667	3.963202
	22.54		23.28				
	22.27		23.04				

I

Exp I				Exp II				Exp III											
Target	Cq	normalize by ago2			Sample	Cq	normalize by ago2			Sample	Cq	normalize by ago2							
0h	25.26 24.41 24.61	24.760231 18	0	1	1	0h	30.73 30.18 30.13	30.34 541	0	1	1	0h	28.91 28.64 28.55	28.699927 23	0	1	1	1	
4h	25.16 24.12 24.21	(0.259735130943 703)	1.1972588	76	0.9	4h	29.96 29.85 29.79	(0.47924676312193 5)	1.3940156	55	0.8	4h	27.91 27.85 28.44	1.7425195 69	#####	1.5514292	76	0.9	1.7238103 07
8h	21.02 20.36 21.95	(3.651410910581 37)	12.565628	35	1.1	8h	26.52 26.88 26.56 27.56	(3.4613953022886)	11.014982	53	0.9	8h	25.02 25.02 25.04	12.238869 48	(3.6734033 531325)	12.758646	23	0.8	15.948307 78
12h	21.11 20.77 21.02	21.065079 36	-3.695151827	48	1.1	12h	27.02 26.85 26.76	26.87 835	-3.467064285	39	0.8	12h	25.04 24.86 24.99	24.921948 66	3.7779785 71	13.717812	83	1.1	12.470738 94
16h	20.54 20.29 20.36	20.396055 47	-4.364175718	16	1.2	16h	26.54 26.40 26.27	26.40 537	-3.940044788	4	0.8	16h	24.54 24.27 24.21	24.240317 95	4.4596092 82	22.002709	39	1.1	20.002463 08
20h	20.67 20.34 20.14	20.383651 72	-4.376579468	87	0.8	20h	26.57 26.32 26.05	26.31 292	-4.032497946	72	0.7	20h	24.13 24.11 24.45	24.120831 39	4.5790958 48	23.902603	27	0.9	26.558448 08
24h	20.24 20.11 20.47	20.275108 06	-4.485123124	05	0.8	24h	27.19 26.26 26.26	26.26 003	-4.08538761	09	0.6	24h	24.35 24.00 24.09	24.045212 4	4.6547148 31	25.188875	82	0.8	31.486094 77

Target	Cq	normalize by ago2			Sample	Cq	normalize by ago2			Sample	Cq	normalize by ago2								
0h	30.12 30.99 30.12	30.41146	0	1	1	0h	31.22 31.88 31.22	31.44378	0	1	1	0h	30.22 30.12 30.32	30.22221	0	1	1	1		
4h	30.22 30.33 30.25	30.27 #####	1.10362	1.1	1.003291	4h	31.21 31.12 31.25	31.20 #####	1.187249	0.9	1.319166	4h	30.01 30.11 30.32	30.15 #####	1.052283	1.1	0.956621			
8h	29.02 29.36 29.95	29.44 #####	1.957894	0.9	2.175438	8h	30.12 30.24 30.03	30.13 #####	2.487946	0.8	3.109933	8h	29.16 28.86 28.52	28.85 #####	2.596903	1.2	2.164086			
12h	28.11 29.77	29.06508	-1.34638	2.542728	1.2	2.11894	12h	29.56 29.24	29.89993	-1.54385	2.915708	1.2	2.429757	12h	28.11 29.77	29.06508	-1.15713	2.230138	0.9	2.477931
16h	29.54 29.29 29.36	29.39606	-1.0154	2.021465	0.8	2.526831	16h	30.14 30.26 30.24	30.20972	-1.23405	2.35227	1.1	2.138427	16h	28.24 28.33 29.55	28.70472	-1.51749	2.862925	0.8	3.578657
20h	29.67 28.34 29.14	29.05032	-1.36114	2.568878	1.1	2.335343	20h	30.57 30.22 30.04	30.27866	-1.16512	2.242518	0.7	3.203598	20h	28.55 28.56 29.01	28.70995	-1.51226	2.852566	1.1	2.593242
24h	29.24 29.11 29.47	29.27511	-1.13635	2.198239	0.8	2.747799	24h	30.12 30.22 30.66	30.33711	-1.10667	2.153476	1.2	1.794564	24h	29.34 29.23 28.98	29.18511	-1.0371	2.052104	1.2	1.710087