

Western: correct protein dilutions
For SOCS1 manuscript

11-20-18

SOCS1: 1:500
maybe ↑ dil. or add more
protein next time. 15 μg of protein

(37 kD)

EXPOSURE TIMES

2 minutes.



LP-
LP15m
LP1h
LP2h
LP4h
LP6h
LP8h
CP-
CP15m
CP1h
CP2h
CP4h
CP6h
CP8h

7 minutes *

+/- IFNγ
10ng/ml.

B-ACTIN: 1:7500 15 μg protein:

(42 kD)

EXPOSURE TIMES



5 sec



10 sec

LP-
LP15m
LP1h
LP2h
LP4h
LP6h
LP8h
CP-
CP15m
CP1h
CP2h
CP4h
CP6h
CP8h

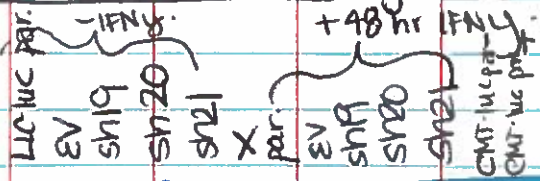
Possible SOCS1 induction w/ IFNγ is regulated
by something else by protein in CMIS → or
happens later.

LLC-luc SocS1 KD cells-

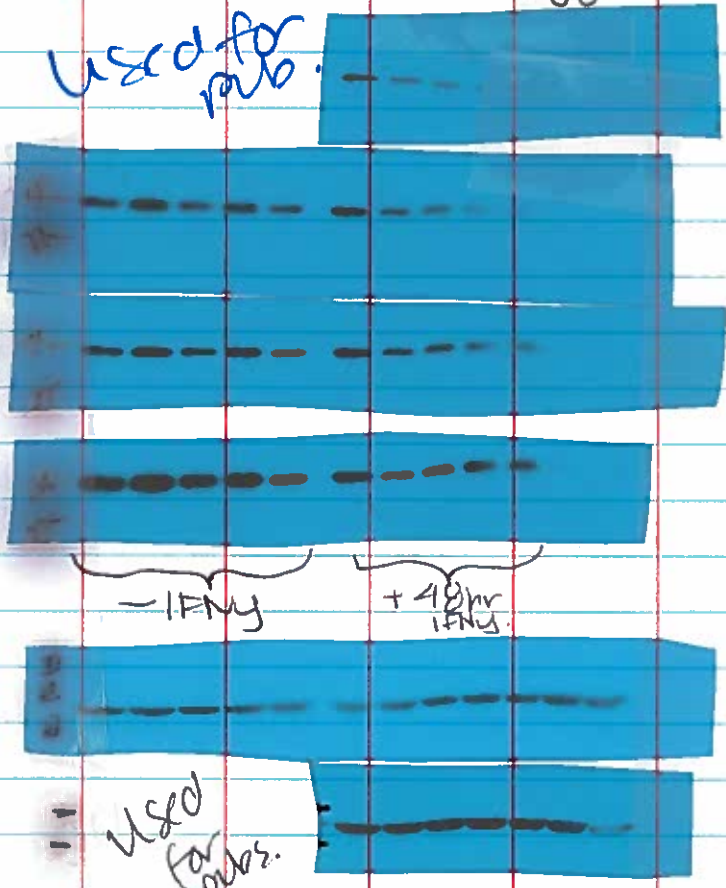
1/20/17

Verifying KD. By Protein

SocS1 Ab - Abcam. 1:400.
 B-actin Ab - Sigma 1:10,000



Used for pubs.



8 sec

20 sec

40 sec

1 min

Touch

3 sec

SocS1
 * Diff. exposure

predicted size is ~24 kD. but certain abs show it running between 50-37 kD.

B-actin
 Diff. exposures.
 ~42 kD.

Used for pubs.

Looks like sh19 is a KD compared to EV and the LC-luc parental line. and possibly sh21.

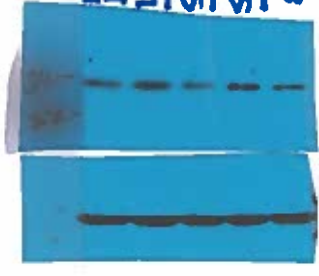
-should I single cell clone sh19?

LLC NTC - IFN γ
 LLC NTC + 15M IFN γ
 LLC NTC + 1hr IFN γ
 SH19 - IFN γ
 SH19 + 15M IFN γ
 SH19 + 1hr IFN γ
 SH20 - IFN γ
 SH20 + 15M IFN γ
 SH20 + 1hr IFN γ
 SH21 - IFN γ
 SH21 + 15M IFN γ
 SH21 + 1hr IFN γ



pSTAT1
 B-actin for pSTAT1.
 STAT1
 B-actin for STAT1.

LLC NTC
 LLC NTC
 SH19
 SH20
 SH21



SOCS1 (Abcam)
 B-actin for SOCS1.

all - IFN γ .

using for CS/17
 SOCS1 publication!