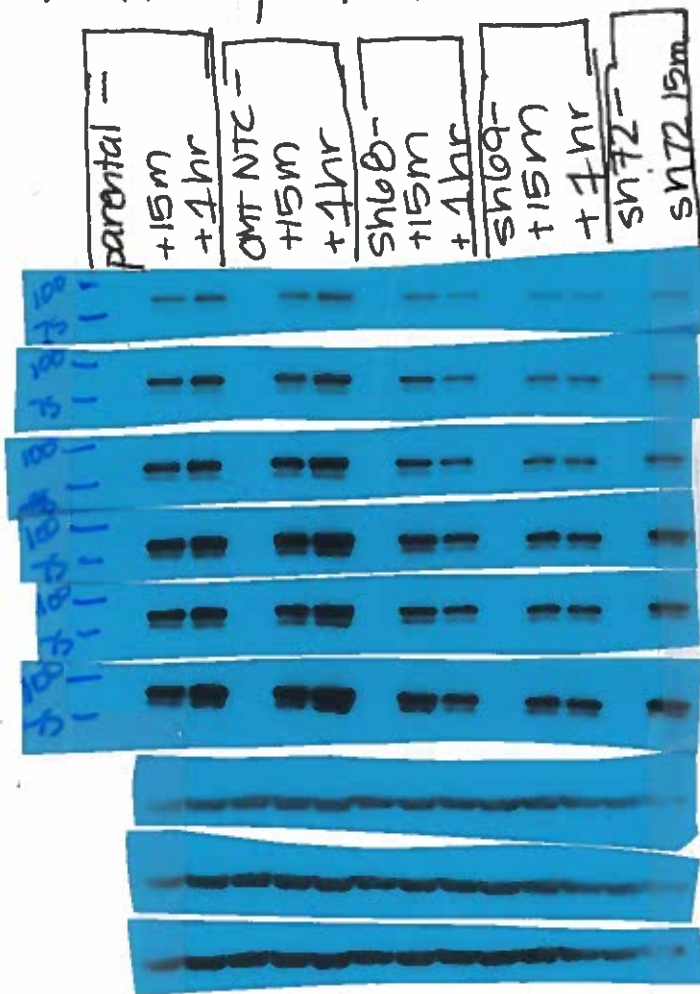


pSTAT1 Expression

07/17.

CMT-lucs Ifng^{r1} KDs.

+/- IFN- γ 1hr, 15min, untreated.



EXPOSURES: pSTAT1

- 2 sec
- 4 sec
- 6 sec
- 8 sec
- 12 sec
- 18 sec

EXPOSURES: β -actin
↳ something weird.

10 μ g of protein loaded:

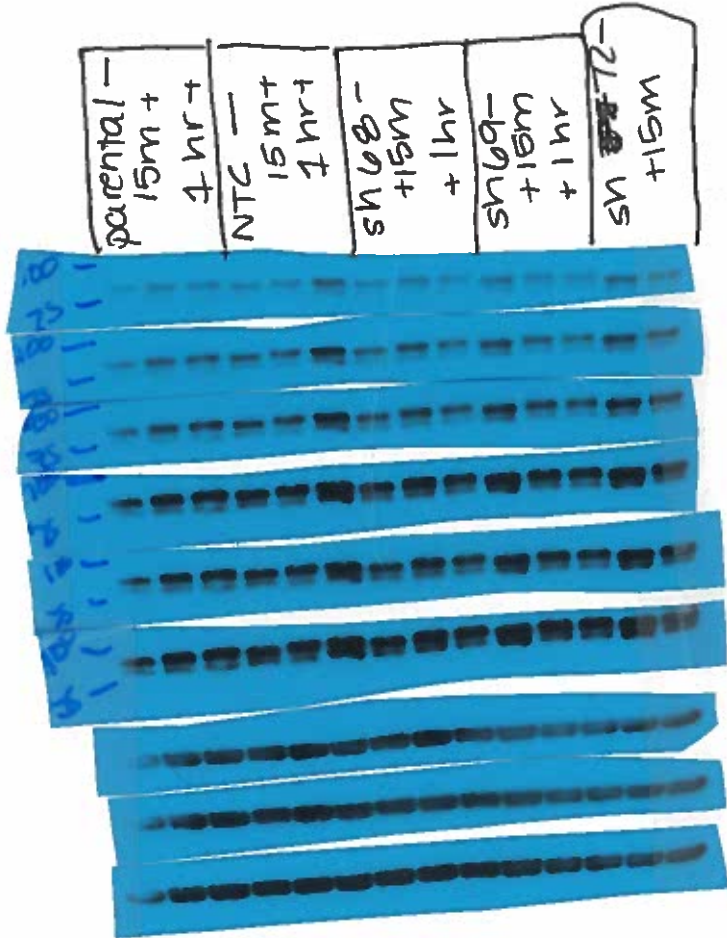
Best decrease of pSTAT1 expression is seen in the sh69 in all exposures, as compared to parental CMT-lucs and the CMT NTC non-targeting control cells.

STAT1 EXPRESSION

07/17

CMV-luc (fngf) KDS

+/- IFN- γ 1hr, 15min, untreated.



EXPOSURES: STAT1

2 sec

3 sec

4 sec

~~5 sec~~

12 sec

16 sec.

EXPOSURES:

B-actin

10ug of protein loaded:

seems to be a \downarrow in stat1 signaling by
4h in the KDS. (sh68/sh69) but not
remarkable differences