

Western (test) w/ new - correct protein dilutions. from Bradford. For socs1 manuscript.

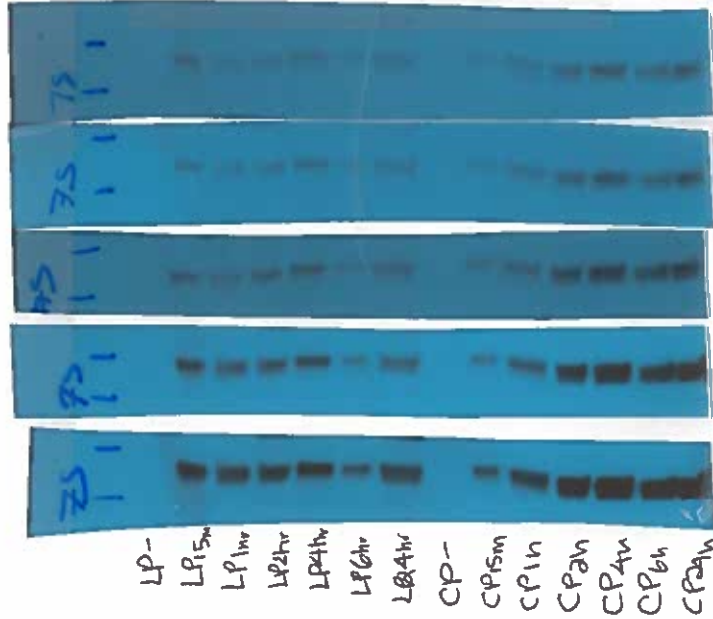
11-16-18.

PSTAT1 1:750.

same gel as Bact. 15ug of protein

91, 84 KD

EXPOSURE TIMES



10sec

17sec

20sec *

30sec

1 minute

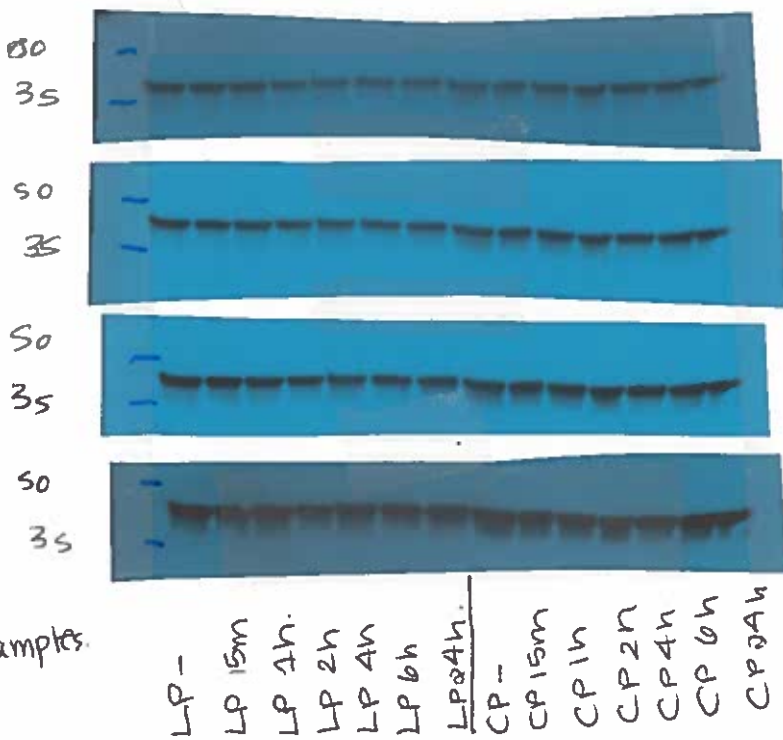
+/- IFN γ 10ng/ml

B-ACTIN 1:10,000.

15 ug of protein.

42 KD

EXPOSURE TIMES



5sec

10sec *

20sec

30sec.

Pretty equal loading.

+/- IFN γ 10ng/ml.

Western: w/ correct protein dilutions
for SOCS1 manuscript

11-20-18

Stat 4: 1:1500 15ug of protein

91, 84 kD

Exposure Times:

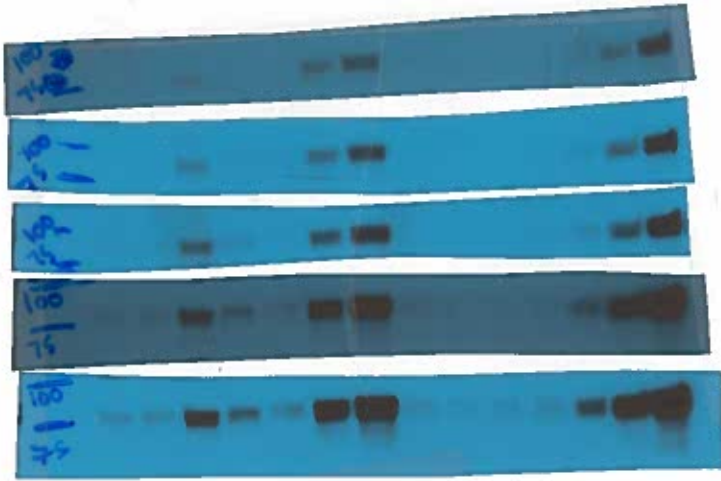
15 sec

30 sec

1 min

2 min

3 min



LP- LP15m LP1h LP2h LP4h LP6h LP24h CP- CP15m CP1h CP2h CP4h CP6h CP24h

+/- IFN γ
10 ng/ml

Corresponding
Beta Actin on the
IFN γ sheet.

These were run w/
same gel.

Western: correct protein dilutions
For scsi manuscript

11-00-18.

IFN α 1:500

1 μ g protein

beta = same gel as stat 1.

only counted ~1/3 lanes - on this blot.

IFN β 2 maybe \uparrow dil. next time or add more protein.

49 kD

EXPOSURE TIMES

2 MIN.

7 MIN. *



↑
LP- LP15m LP2h LP2h LP2h LP2h LP2h LP2h
LP2h CP- CP15m CP1h CP2h CP2h CP2h CP2h

B-ACTIN 1:7500

1 μ g protein

T/- IFN γ 10ng/ml.

42 kD

EXPOSURE TIMES

30 SEC



LP- LP15m LP1h LP2h LP2h LP2h LP2h LP2h
LP2h CP- CP15m CP1h CP2h CP2h CP2h CP2h

5 sec.